


KNOWLEDGEBASE

Support and Help	(1186)
On Demand Videos	(94)
Downloads	(54)
Service Updates and Known Issues	(59)


**CR ClubRunner**  
Like Page

Be the first of your friends to like this



**CR ClubRunner**  
22 hrs

This week, we're at the #Rotary SoCalNev PETS. If you're attending, drop by and meet Jeffrey from our team.



3 Comment Share

Follow @clubrunner

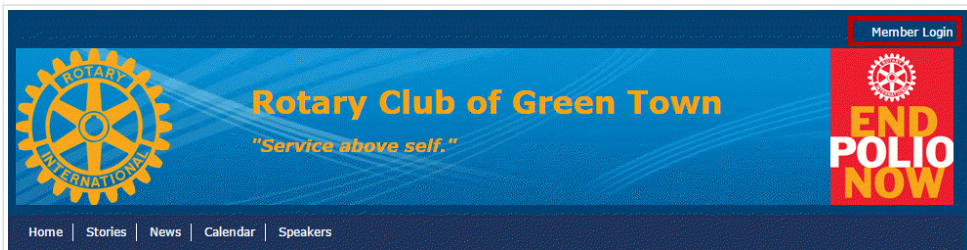
Knowledgebase: [Support and Help](#) > [Knowledgebase Articles](#) > [Club Version](#) > [Club and Membership](#) > [Editing Club Executives](#)

# How do I carry current executives over to the next year?

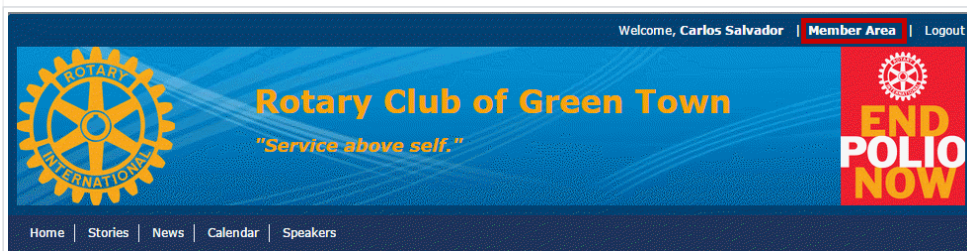
Posted by Pieter van Hiel on 12 November 2014 11:34 AM

Your club executive list only applies to the given calendar year in which it was created. However, you can easily carry your current list of executives over to a future year.

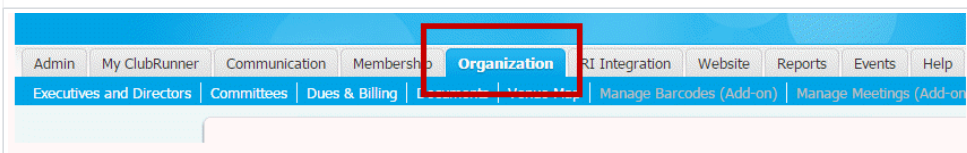
1. To manage your club executives, you must go to your club homepage and log in. Click **Member Login** at the top right, just above your club banner.



2. Then, click on **Member Area** on the top right, under your club banner.



3. Along the top of the screen you will see several tabs. Click on the **Organization** tab.



4. The **Organization** tab contains several features which allow you to organize your club membership. Now, click on **Executives and Directors** under the **Organization** tab.

Tweets by @ClubRunner

**ClubRunner Services**  
@ClubRunner

#Rotary Club of Hampton Bays, Waverly, Bargara, Weston, Taieri, Twin Rivers, Yuma North End & Menomonie Noon - Welcome to #ClubRunner!

07 Feb

**ClubRunner Services**  
@ClubRunner

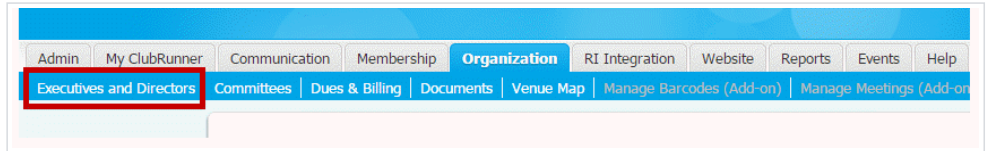
Looking for some inspiration for your own #ClubRunner website? Check out a few websites using our Next-Gen themes! [bit.ly/2i1RbsA](http://bit.ly/2i1RbsA)



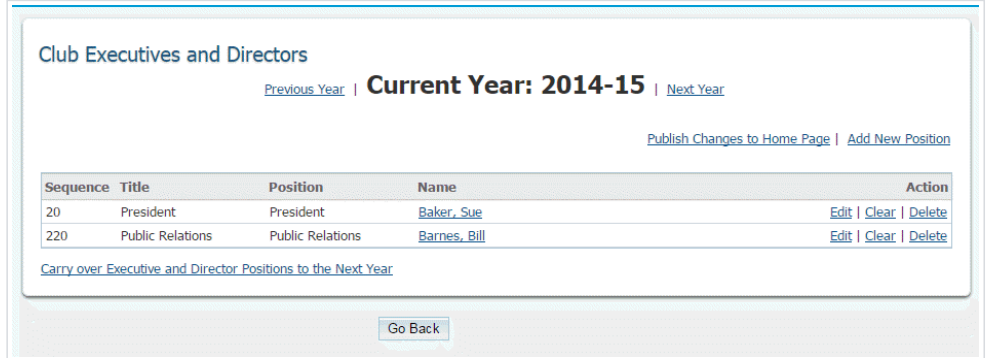
03 Feb

**ClubRunner Services**  
@ClubRunner

Embed [View on Twitter](#)



5. You are now on the **Club Executives and Directors** page. Here, you can identify club directors and executives, remove past directors and executives, edit their contact details, and more.



**Club Executives and Directors**

[Previous Year](#) | **Current Year: 2014-15** | [Next Year](#)

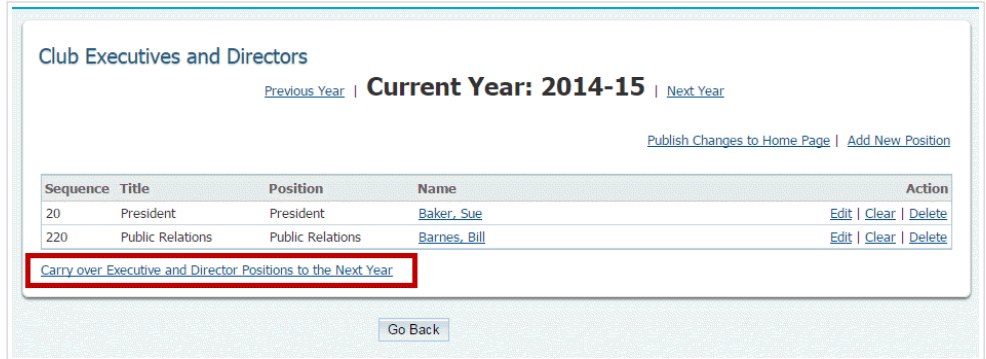
[Publish Changes to Home Page](#) | [Add New Position](#)

Sequence	Title	Position	Name	Action
20	President	President	<a href="#">Baker, Sue</a>	<a href="#">Edit</a>   <a href="#">Clear</a>   <a href="#">Delete</a>
220	Public Relations	Public Relations	<a href="#">Barnes, Bill</a>	<a href="#">Edit</a>   <a href="#">Clear</a>   <a href="#">Delete</a>

[Carry over Executive and Director Positions to the Next Year](#)

[Go Back](#)

6. To carry over the existing positions with their current members, click **Carry over Executive and Director Positions** to the Next Year, as highlighted below.



**Club Executives and Directors**

[Previous Year](#) | **Current Year: 2014-15** | [Next Year](#)

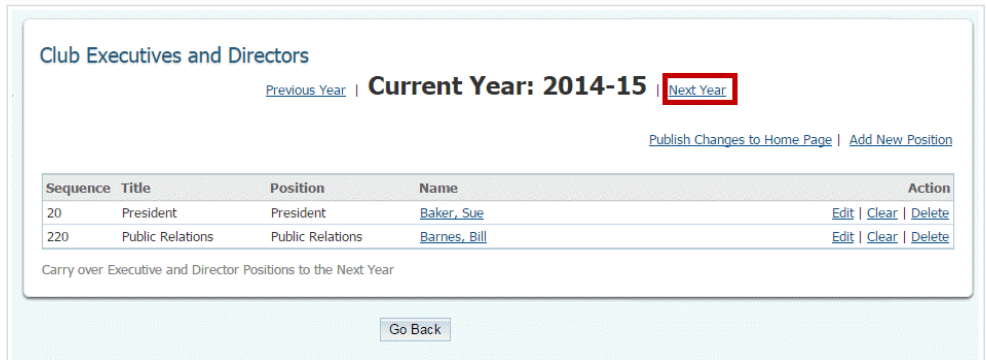
[Publish Changes to Home Page](#) | [Add New Position](#)

Sequence	Title	Position	Name	Action
20	President	President	<a href="#">Baker, Sue</a>	<a href="#">Edit</a>   <a href="#">Clear</a>   <a href="#">Delete</a>
220	Public Relations	Public Relations	<a href="#">Barnes, Bill</a>	<a href="#">Edit</a>   <a href="#">Clear</a>   <a href="#">Delete</a>

[Carry over Executive and Director Positions to the Next Year](#)

[Go Back](#)

7. Your currently assigned members are automatically carried over in their position until next year. To view this, click **Next Year** at the top right of the field.



**Club Executives and Directors**

[Previous Year](#) | **Current Year: 2014-15** | [Next Year](#)

[Publish Changes to Home Page](#) | [Add New Position](#)

Sequence	Title	Position	Name	Action
20	President	President	<a href="#">Baker, Sue</a>	<a href="#">Edit</a>   <a href="#">Clear</a>   <a href="#">Delete</a>
220	Public Relations	Public Relations	<a href="#">Barnes, Bill</a>	<a href="#">Edit</a>   <a href="#">Clear</a>   <a href="#">Delete</a>

[Carry over Executive and Director Positions to the Next Year](#)

[Go Back](#)

8. Here, you can confirm the executive positions are correctly assigned for the next calendar year.

### Club Executives and Directors

[Previous Year](#) | **Year: 2015-16** | [Next Year](#)

[Add New Position](#)

Sequence	Title	Position	Name	Action
20	President	President		<a href="#">Edit</a>   <a href="#">Clear</a>   <a href="#">Delete</a>
220	Public Relations	Public Relations		<a href="#">Edit</a>   <a href="#">Clear</a>   <a href="#">Delete</a>

[Carry over Executive and Director Positions to the Next Year](#)

[Go Back](#)

☆☆☆☆☆ (0 vote(s)) [Helpful](#) [Not helpful](#)